



# **City Charter High School**

Dress Code for Female Students

August 2015

# Acceptable Attire – Female Students

- Collared dress shirt or dress blouse which completely covers the bust area, stomach, sides and back, and is not cut below the shoulder blade
- Sheer blouses worn with a camisole which conceals undergarments
- Vests and blazers worn over a school appropriate shirt or dress
- Dress pants which are full length, originate at the waist and cover the ankle bone
- Dresses and skirts (knee length or longer in the front, sides and back)
- Skirts that originate at the waist
- Dresses that completely cover the bust area and not cut below the shoulder blade
- Sleeveless dresses and blouses with an appropriate sweater or blazer
- Make-up and jewelry which is business appropriate (as determined by the administration of City High).
- Hair and headbands that do not exceed 2 inches in width
- Dress shoes, closed toe

# Shirts for Young Ladies



- Collared dress shirt or dress blouse
- Sleeveless blouses **MUST** be worn with an appropriate sweater or blazer
- Blouses must completely cover the bust area, the stomach, sides and back and may not be cut below the shoulder blade. Sheer blouses **MUST** be worn with a non-sheer camisole

# Sweaters, Vests and Blazers for Young Ladies

- Blazers must be worn over a school appropriate shirt or dress
- Sweaters may be worn without a school appropriate shirt.



# Pants for Young Ladies

- Dress/khaki/Docker style pants
- Full length pants which originate at the waist OR Ankle Pants (NOT CAPRI PANTS – Ankle pants are not more than one inch above the ankle)
- Pockets must originate at the waist



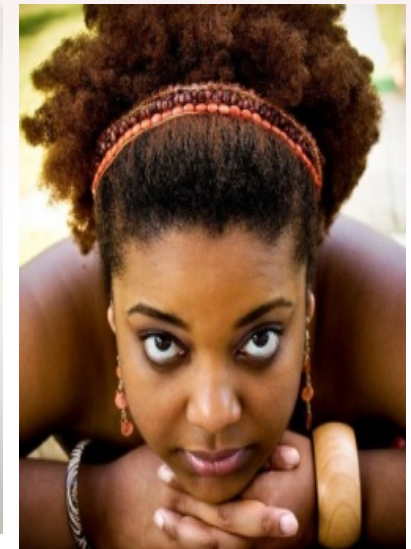
# Skirts and Dresses for Young Ladies

- Must be knee length or longer
- Skirts must originate at the waist
- Dresses must have straps
- Dresses must completely cover bust area and may not be cut below the shoulder blade
- Sleeveless and spaghetti strap dresses MUST be worn with a school appropriate sweater or blazer



# Jewelry and Head Bands for Young Ladies

- Facial jewelry must be a stud
- Make-up and jewelry must be business appropriate (as determined by the administration of City High)
- Only minimal jewelry is permitted (as determined by the administration of City High)
- Hair/headbands may not exceed two (2) inches in width.



# Shoes for Young Ladies

- Dress shoes
- Closed toe





# Not Permitted

- Denim and denim look clothing in any item or in any color
- Chest logos, pictures, insignias or branding (Logos on polo-style shirts MAY NOT exceed 2" in diameter)
- Dickie's shirts, tank tops, cami's, tee shirts (long or short sleeved) and shirts, sweaters or vests with a hood
- Yoga pants, stretch pants, skinny pants, leggings, Capri's, MC Hammer pants, overalls, shorts, pajama bottoms, jogger style pants
- Pants with more than 2 pockets in the front and 2 pockets in the back, pants fitted at the calf or ankle
- Pants with pockets that originate below the waist, have rivets, studs, writing, logos or pictures; sagging pants
- Skirts, dresses and pants which are made of or include spandex or sweater knit (Fabrics that stretch or any form-fitted clothing)
- Dress and skirt splits which are more than 3" above the knee
- Spandex attire (dresses, skirts and pants)

# Not Permitted

- Clothing with cut-outs
- Jewelry and belts made with bullets, bullet casings or pointed studs or anything that can be used as a weapon and earrings which exceed 3" in length or diameter
- Hats, scarves, hoods, wave caps, shower caps, sweatbands, bandannas, glasses, headsets, combs, picks and curlers
- Slippers, moccasins, flip-flops, Sperry's (or Sperry type boat shoes), shoes with a sneaker bottom, shoes that cover the ankle
- Sheer clothing which reveals under-garments and which does not adequately cover private body parts

Students with facial piercings must wear small studs.

Administration reserves the right to determine if a tattoo is inappropriate and require the student to keep it covered.

# Not Permitted – SHIRTS, SWEATERS, VESTS, BLAZERS



- Chest logos or emblems on polo shirts larger than two (2) inches in diameter
- Writing, logos, pictures, branding or anything negative
- Tank tops, shirts with cut-outs, tee shirts and tee shirt style shirts, strapless and halter style shirts
- Cami's (worn as a shirt)
- Denim, denim-looking and Dickie's shirts
- Henley style shirts, long-johns or thermal shirts
- Vests and blazers with writing, insignias or pictures

# Not Permitted PANTS

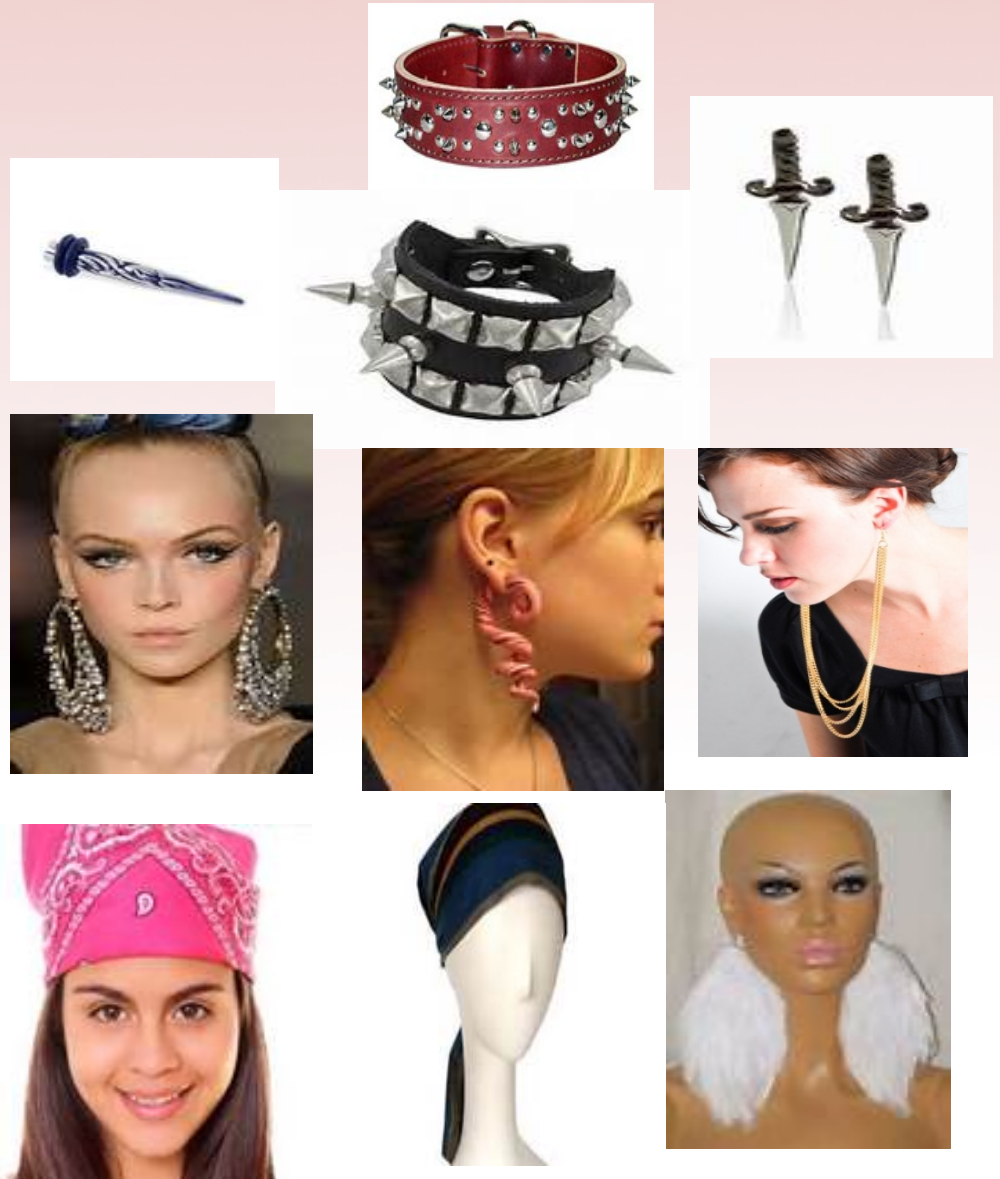
- More than two (2) pockets in the front and two (2) pockets in the back
- Pockets that originate on the trouser leg or below the waist
- Pants with rivets, writing, logos or pictures
- Yoga, stretch pants, skinny pants, jeggings, leggings, pajama bottoms, Joggers, MC Hammer style
- Pants with elastic at the ankle
- Capri pants, shorts
- Halter top and strapless jumpsuits



# Not Permitted

## JEWELRY, MAKE-UP, HEAD WEAR

- Facial jewelry (other than a stud)
- Excessive jewelry (as determined by the administration of City High)
- Earrings exceeding 3 inches length or diameter
- Jewelry made with bullets or pointed studs or anything that can be used as a weapon
- Hats, hoods, wave caps, shower caps, sweatbands, bandannas, glasses, headsets, combs, picks, curlers
- Artificial hair color can not be extreme (as determined by City Charter HS Administration)



# Not Permitted SHOES



- Slippers, moccasins, flip-flops, Sperry's, open-toed shoes, boat shoes, Toms, shoes with a sneaker bottom, and shoes which cover the ankle and boots
- Shoes with pointed studs

# Not Permitted DRESSES and SKIRTS



- Dresses, skirts and pants made with OR including spandex OR sweater knit or that fit like a glove. **(Fabrics that stretch are made of spandex or include spandex)**
- Sheer dresses and skirts worn with sheer underskirts and underskirts which do not meet the dress code requirement.
- Splits more than 3" above knee
- Dresses with cut outs or cut beneath the shoulder blade in the back
- Halter and strapless dresses